

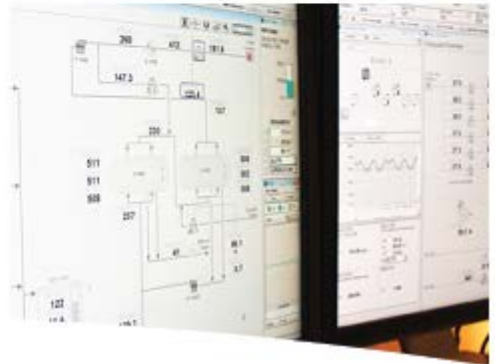


# LIN & ASSOCIATES, INC.

ALTIUS "HI-PERFORMANCE HMI SOLUTION"  
V5.2

## L&A PRODUCT RELEASE NOTES

Compatible with Honeywell Experion® PKS R410



**Address** 11811 North Tatum Boulevard, Suite 4080, Phoenix, AZ 85028  
**Phone** 602.943.5235 **Email** [info@linandassociates.com](mailto:info@linandassociates.com) **Web** [www.LinandAssociates.com](http://www.LinandAssociates.com)

# ***COPYRIGHT***

**Copyright © 2005 – 2014 by Lin and Associates, Inc.  
All Rights Reserved**

No part of this publication may be reproduced, transcribed, stored in a retrieval system, translated into any language or computer language, or transmitted in any form whatsoever without the prior written consent of the publisher. For more information, please contact Lin and Associates, Inc.

TotalPlant, TDC 3000, TPS, HMIWeb, Experion® PKS, Safeview, ACM and LCN are U.S. registered trademarks of Honeywell, Inc. All other brand or product names appearing herein are trademarks of their respective companies or organizations.

The HMIWeb shape library, display templates, trends, menu bar application, loopwatch application, widgets, visual basic scripting, and example images contained in the ALTIUS “Hi Performance HMI Solution” are sole property of Lin and Associates, Inc.

Lin and Associates, Inc.  
11811 North Tatum Boulevard, Suite 4080  
Phoenix, AZ 85028  
(602) 943-5235  
fax: (602)-371-8813  
Info@LinandAssociates.com  
[www.LinandAssociates.com](http://www.LinandAssociates.com)

---

## **Table of Contents**

---

<b>1</b>	<b>ALTIUS Overview .....</b>	<b>4</b>
<b>2</b>	<b>Product Enhancements .....</b>	<b>5</b>
2.1	Advanced Graphic Library .....	5
2.2	Three-Tier Navigation Menu.....	5
2.3	Widgets.....	5
2.4	DAT Ribbon .....	5
<b>3</b>	<b>Bug Fixes.....</b>	<b>6</b>
3.1	Bug Fixes (5.1.1).....	6

## **1 ALTIUS Overview**

---

The ALTIUS “Hi-Performance HMI Solution” for Honeywell Experion® PKS delivers an intuitive, user-friendly, process control interface. With ALTIUS, highly functional, intuitive, clean and consistent operational graphics become a reality. Better tools ensure a better chance of operational success during all plant conditions. ALTIUS “Hi-Performance HMI Solution” version 5.2 incorporates many new features and refinements that are sure to benefit your process control environment.

This document contains a brief list of the new features and improvements found in this version of ALTIUS. Complete and comprehensive information can be found in the appropriate User Guides:

- L&A Advanced Graphic Library User Guide
- L&A Three-Tier Navigation Menu User Guide
- L&A LoopWatch Monitor User Guide
- L&A Widgets User Guide
- L&A LimitWatch User Guide
- L&A Alarm Informant User Guide
- L&A ToolKit User Guide
- L&A Advanced Graphic Library Shape Definitions
- L&A Dashboard User Guide

Note: For clients currently using a prior release, please contact Lin & Associates for a complete guide to upgrading to Version 5.2. We would gladly appreciate the opportunity to discuss the advantages of upgrading.

## **2 Product Enhancements**

---

### **2.1 Advanced Graphic Library**

- Additional Fieldbus shapes to support native functionality.
- Operating Limit setting enhancements allowing options to restore the console/display defaults and/or generate defaults.
- Object-based yoking for the automatic update of widget content and/or display invocation with single-click shape interaction.
- Show-Hide operator controls featuring rollover/reveal capabilities (vertical or horizontal) to reduce the amount of buttons on screen.
  - New toggling option to hide unnecessary display noise like equipment names, instrument lines, etc.
- Application Center updated to support all new features found in ALTIUS v5.2 products.
  - Preset Safeview configuration settings
- Line-ups shape that allows animation like show/hide or stylesheet change on objects directly on the display based on a predefined condition.

### **2.2 Three-Tier Navigation Menu**

- Tabbed menu shape that embeds a single row of navigation within a process control graphic for lower tier (Level 3 & 4). Uses the same menu configuration but contains independent visual styles configured in Application Center.

### **2.3 Widgets**

- Additional group widget available with nine configurable sections.

### **2.4 DAT Ribbon**

- Visual enhancements for the operator settings.

## **3 Bug Fixes**

---

Fixes for reported issues on prior releases are carried forward into newer releases. Below is a summary of corrections found in the prior release of Lin and Associate’s ALTIUS “Hi Performance HMI Solution” v5.1.1.

### **3.1 Bug Fixes (5.1.1)**

- Fixed Mini trend by removed EU units range restriction
- Fixed Operating Limits Setting to save default values if not existed and not being able to save both the default and the limits values
- Widget displays and templates do not have correct stylesheet and display back style color
- Group widget use SIFL for TPS controller instead of SHUTDOWN
- Fixed sysdtltpsswa\_fp.htm faceplate from throwing errors and not populating with correct data
- Fixed Indicator\_notag\_SIS box to properly auto resize
- [J-GP-149] – Mini trend popup does not populate with data when running under “View Only” account
- [J-GP-200] - Fix issue with dig\_status\_noalm\_TPS.sha not invoking faceplate
- [J-GP-201] – Operating Limits popup, for some instances, changes made on the limits revert back to the default values
- [J-GP-211] Default RCM file path is wrong
- [J-GP-215] CDA shapes have wrong width of 98 pixels instead of 90 pixels
- [J-GP-220] Faceplate enhancement invocation of mini trend or average display contain wrong information
- [J-TOOL-1] Fixed issue with alarm group editor crashing when importing a large alarm group file
- [J-LOP-1] On some instances drag-n-drop into Loopwatch does not release the mouse right away
- [J-NAV-6] Menu crashed if the menu .xml file is missing

~ END OF DOCUMENT ~